

STATE OF ARKANSAS
STATE HIGHWAY COMMISSION

FISCAL YEAR	Job No.	SHEET NO.	TOTAL SHEETS
1929	4-123	1	33

INDEX OF SHEETS

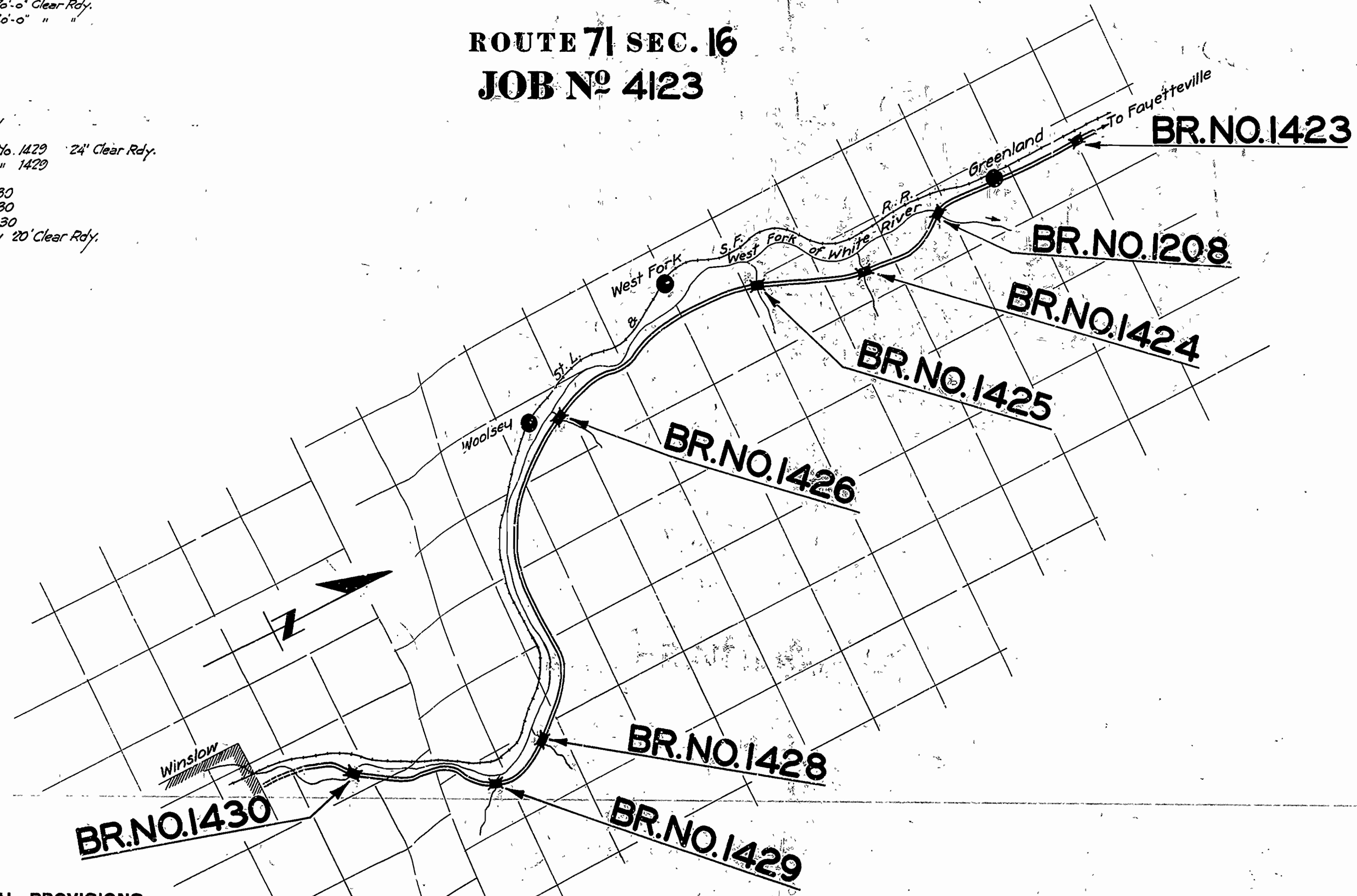
Sheet No.	Drawg. No.	Title
1	2501	Title Sheet
2	2502	Layout Br. No. 1423
3	2503	Details of Br. No. 1423 Abutments
4	2504	" of Bents Br. No. 1423
5	1001	Details of Std. 25' R.C.D. Gir. 20'-0" Clear Rdy.
6	2505	Layout of Br. No. 1208
7	2506	Details of Abutments Br. No. 1208
8	2507	" of Piers Br. No. 1208
9	1095	" of Std. 100' Pony Truss Span, 20'-0" Clear Rdy.
10	2508	Layout of Br. No. 1424
11	2509	Details of Substructure Br. No. 1424
12	1003	" of Std. 35' R.C.D. Gir. 20' Clear Rdy.
13	2510	Layout of Br. No. 1425
14	2511	Details of Abutments Br. No. 1425
15	2512	" of Bents " " 1425
16	2513	Layout of Br. No. 1426
17	2514	Details of 30' R.C.D. Gir. - 20° Skew - 20'-0" Clear Rdy.
18	2515	" of 50' R.C.D. " 20° " 20'-0" " "
19	2516	" of Substructure Br. No. 1426
20	2517	" of Substructure Br. No. 1426
21	2518	Layout of Bridge No. 1428 (Revised)
22	2519	Details of Abut. No. 1 Br. No. 1428
23	2520	" of Abut. No. 2 " " 1428
24	2521	" of Bents Br. No. 1428
25	1024	" of 35' R.C.D. Girder. 25° Skew
26	2522	Layout of Br. No. 1429
27	2523	Details of Superstr. and Bents Br. No. 1429 24' Clear Rdy.
28	2524	" of Abutments " " 1429
29	2525	Layout of Br. No. 1430
30	2526	Details of Abutment No. 1 Br. No. 1430
31	2527	" of Bents " " 1430
32	2528	" of Abutment No. 5 " " 1430
33	2529	" of 35' R.C.D. Gir. 49° Rt. Skew 20' Clear Rdy.

PLAN OF PROPOSED BRIDGES
ON
FAYETTEVILLE-WINSLOW ROAD
WASHINGTON COUNTY

ROUTE 71 SEC. 16
JOB NO 4123

QUANTITIES

Item No.	Description	Quantity	Unit
12	Common Excavation	3740	Cu. Yds.
13	Dry	1677	" "
13	Wet	2802	" "
13	Rock	778	" "
17	Borrow	6882	" "
54	Class 'A' Concrete	1621.91	" "
54	" 'S'	254.49	" "
55	Reinf. Steel	410,231	Lbs.
56	Structural Steel (Trusses)	295,517	Lbs.
69	Rip Rap	245	Cu. Yds.
74	Concrete Handrail	1608	Lin. Ft.
5.P.	Removing Existing Structures	Lump Sum	



LAYOUT
Scale:

LENGTH OF PROJECT = 1795'-0" = .340 MI.
LENGTH OF BRIDGES = 1070'-11 1/2"
LENGTH OF EMBANKMENT = 724'-1 1/2"

SPECIAL PROVISIONS

Item	No. of Sheets
Borrow	2
Rip Rap	1
Removal of Existing Structures	1
Engineers Field Office	1
Work Order	1

The Specifications adopted by the State Highway Commission, May 30th, 1925 apply with subsequent revisions and Special Provisions noted apply to this Project.

Pamphlet A	Revised Sept. 1st, 1928
B	
C	Revised July 1st, 1928
D	
E	
F	
G	
H	Revised Oct. 1st, 1928
I	
J	Revised Jan. 1st, 1929
K	
L	Revised Jan. 1st, 1929

Revised Bridge No. 1428
2-11-30 F.C.B.

APPROVED
CHAIRMAN - STATE HIGHWAY COMMISSION
APPROVED
STATE HIGHWAY ENGINEER

M.B. [Signature]
BRIDGE ENGINEER

FISCAL YEAR	Job No.	SHEET No.	TOTAL SHEETS
1929	4123	6	33

FED. ROAD DIST. No.	STATE	FED. AID PROJ. No.	FISCAL YEAR	SHEET No.	TOTAL SHEETS
6	ARK	36-Res		10	37

From Sta.	To Sta.	Width of Rt. of W.	Width of Lt. of W.	Total Width
269+85	277+85	70'	85'	155'
277+85	281+35	80'	100'	180'
281+35	335+90	100'	40'	80'

Item No.	Description	Quantity	Unit
13	Excavation for Structures (Wet)	175	Cu. Yds.
13	Excavation " (Dry)	712	"
13	Excavation " (S.R.)	75	"
17	Borrow Excavation for Structures	250	"
5A	Class "A" Concrete	452.80	"
5A	Class "S" Concrete	195.72	"
55	Reinforcing Steel	87650	Lbs.
56	Struct. Steel in Truss Bridges	233851	"
74	Concrete Paving for Structures	134	Lin. Ft.

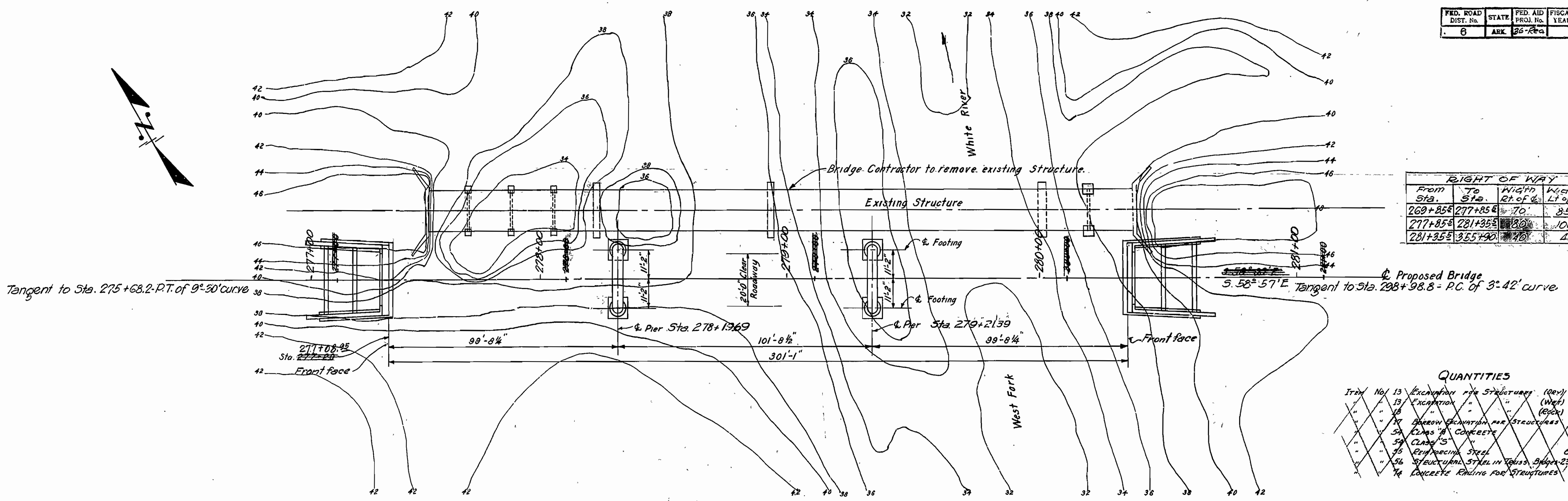
General Notes
 All exposed corners to have 1/4 Chamfer unless otherwise noted.
 Precast concrete handrails to be 1:1:2 mix max. aggregate 3/8".
 Reinforcing steel to be deformed bars of Structural or Intermediate grade.
 Shop list and bending diagrams of steel must be submitted by the Contractor before fabrication is begun.
 All concrete in abutments and piers except handrails to be Class "A".
 All concrete to be poured in the dry.
 Specifications: Arkansas Standard Road and Bridge specifications adopted May 30, 1925 and revised.
 See drawing No. 1095 for general notes pertaining to superstructure.

**LAYOUT OF
 BRIDGE OVER
 WEST FORK OF WHITE RIVER
 STA. 275 TO STA. 282
 WASHINGTON COUNTY**

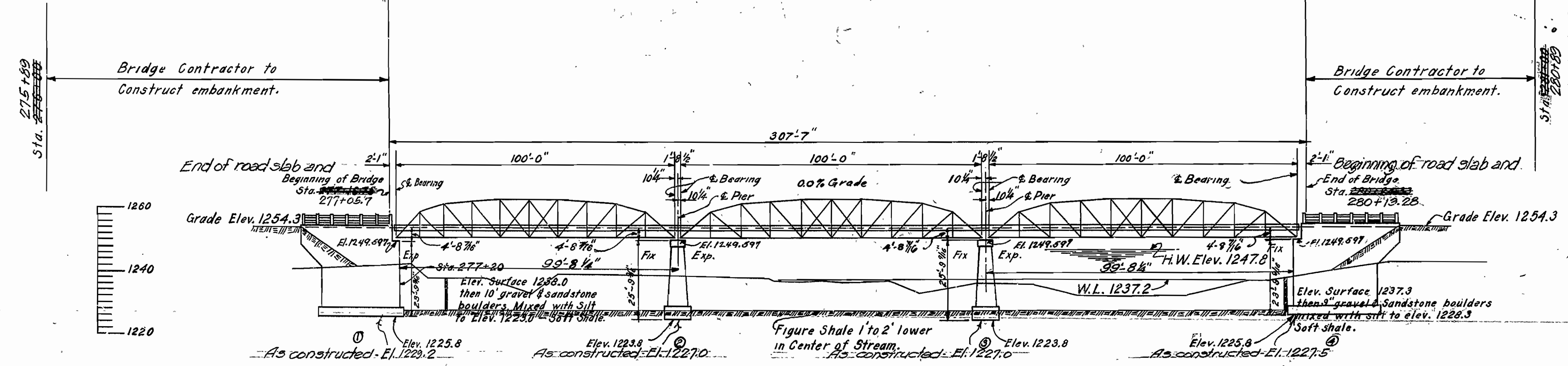
**ROUTE 71 SEC. 16
 ARKANSAS STATE HIGHWAY DEPARTMENT
 LITTLE ROCK, ARK.**

Drawn By: A.L.G. Date: _____
 Traced By: Clark Date: _____
 Checked By: _____ Date: _____
BRIDGE NO. 1208 **DRAWING NO. 2505**
 Revised 6-5-30

M.B. Lewis
 BRIDGE ENGINEER



PLAN



GENERAL ELEVATION

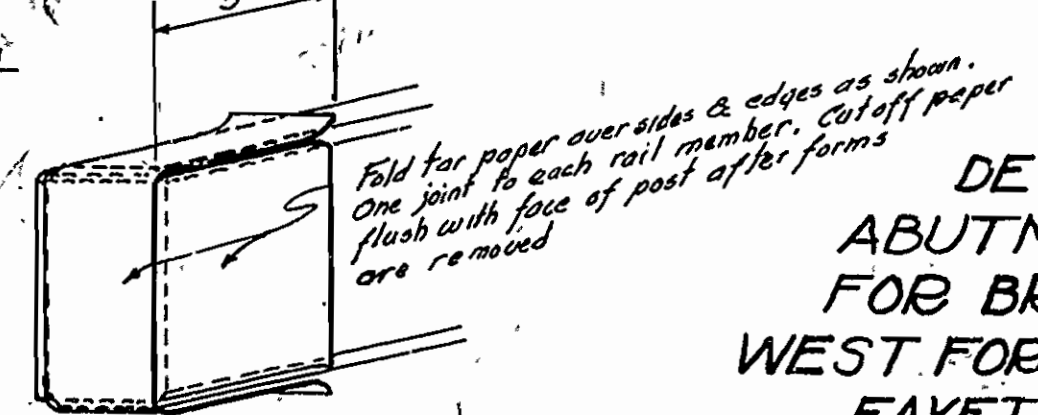
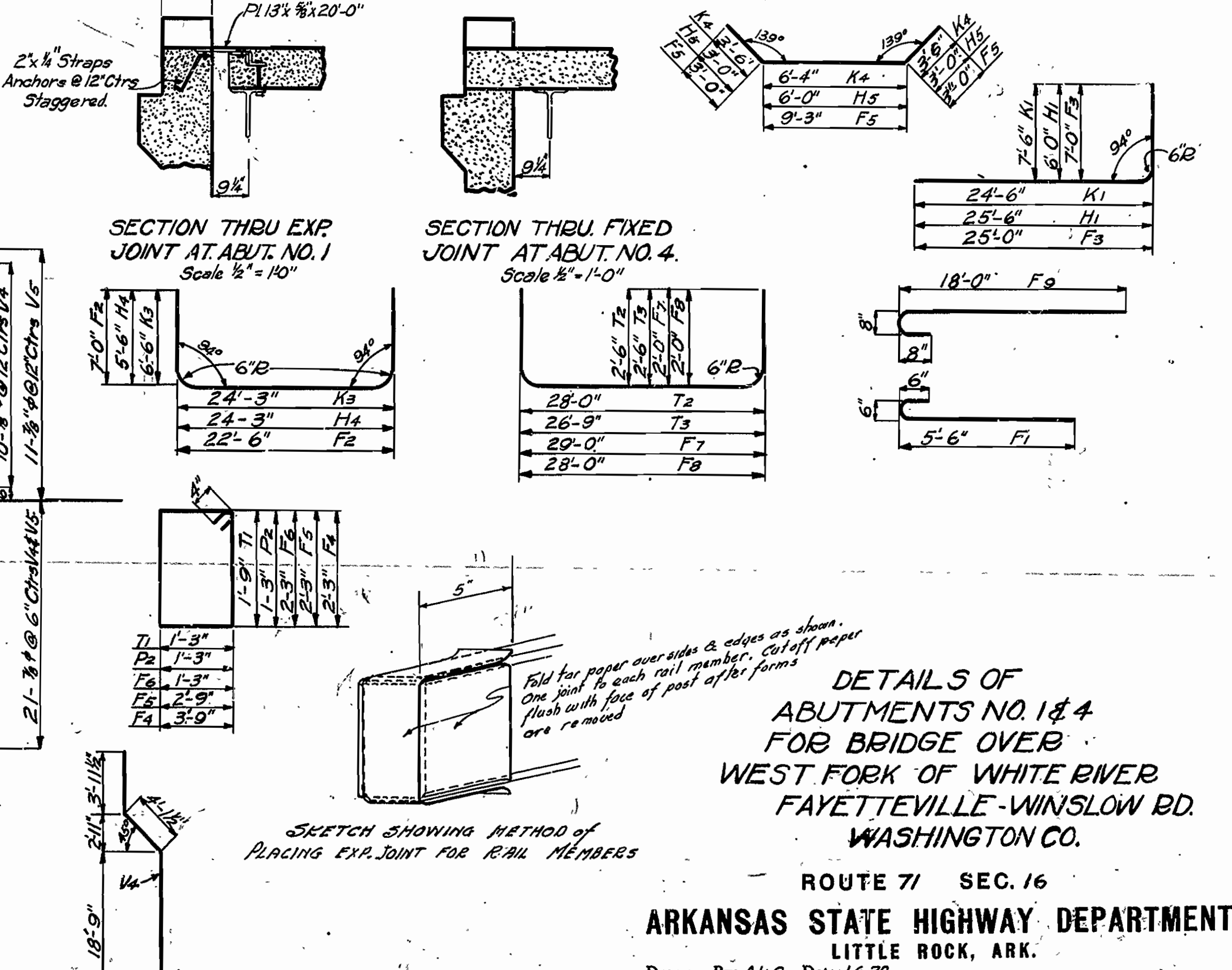
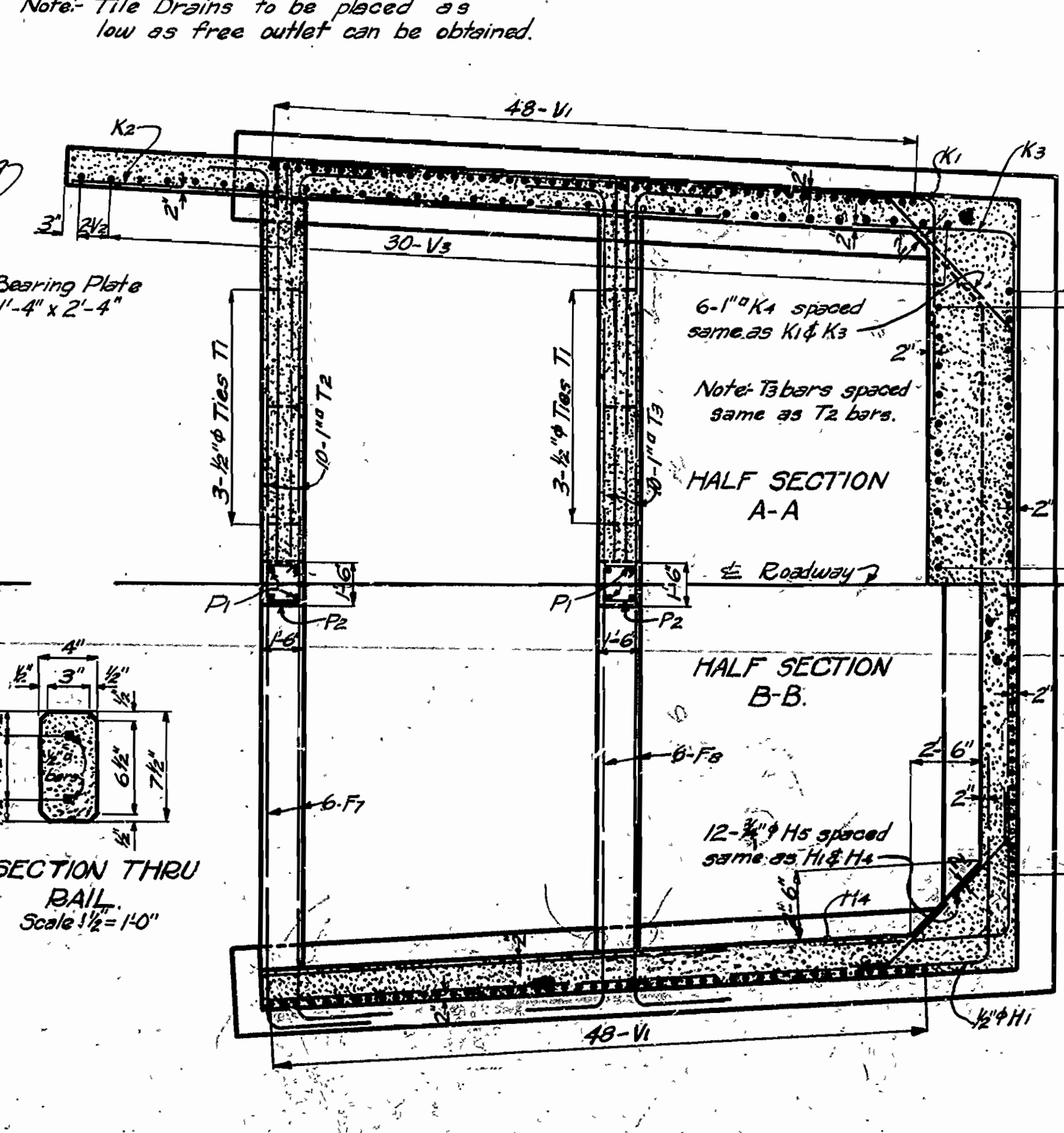
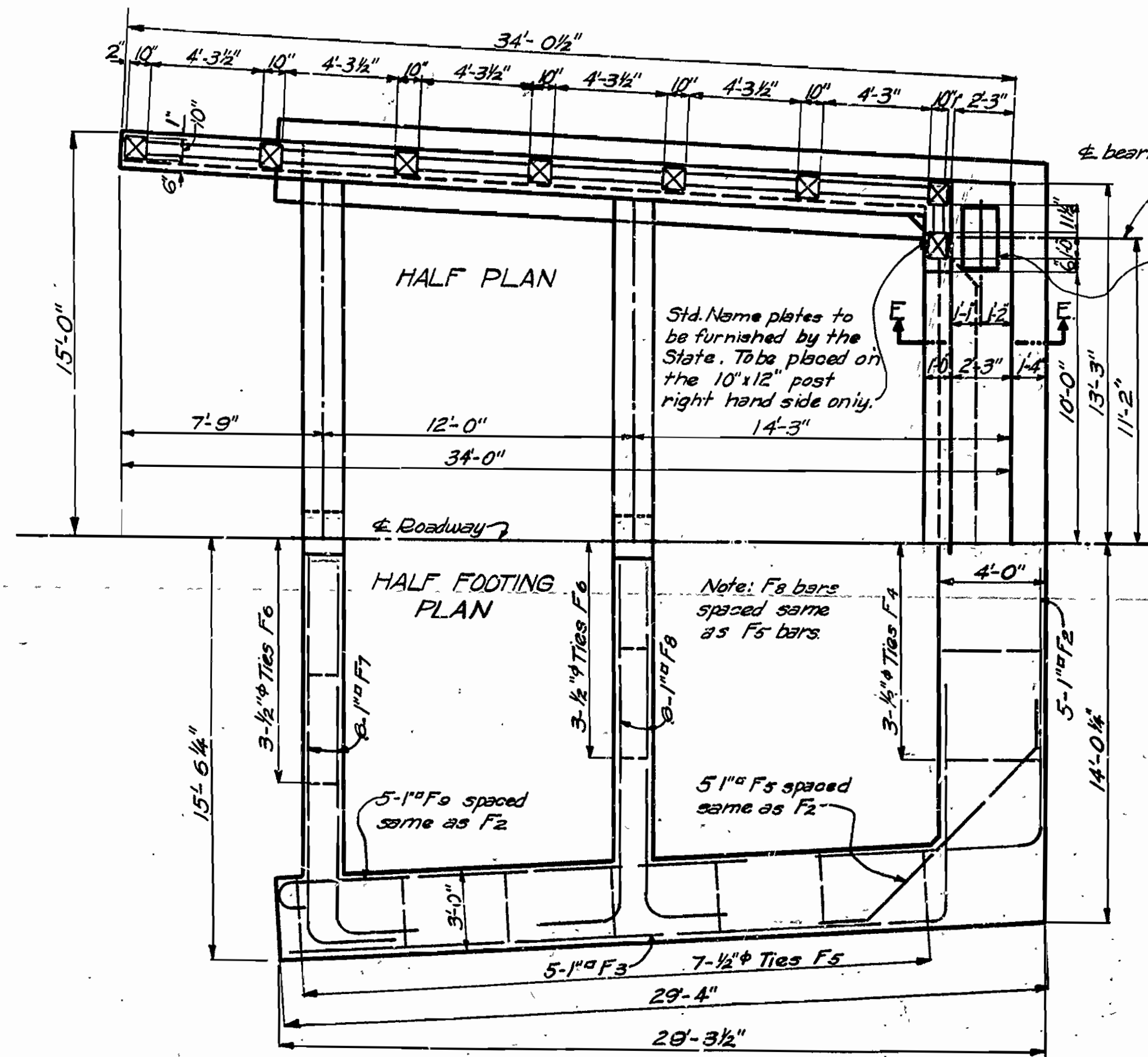
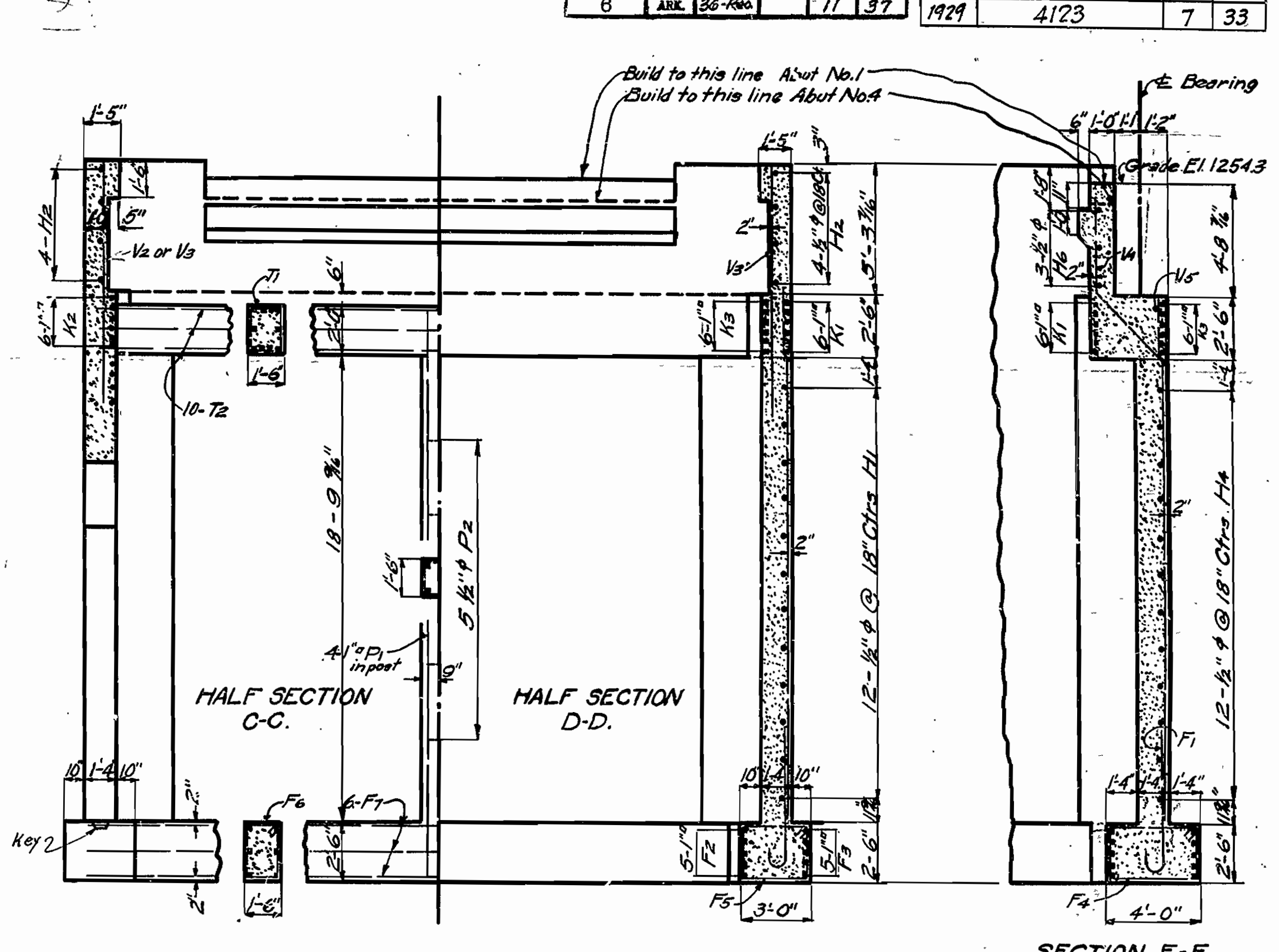
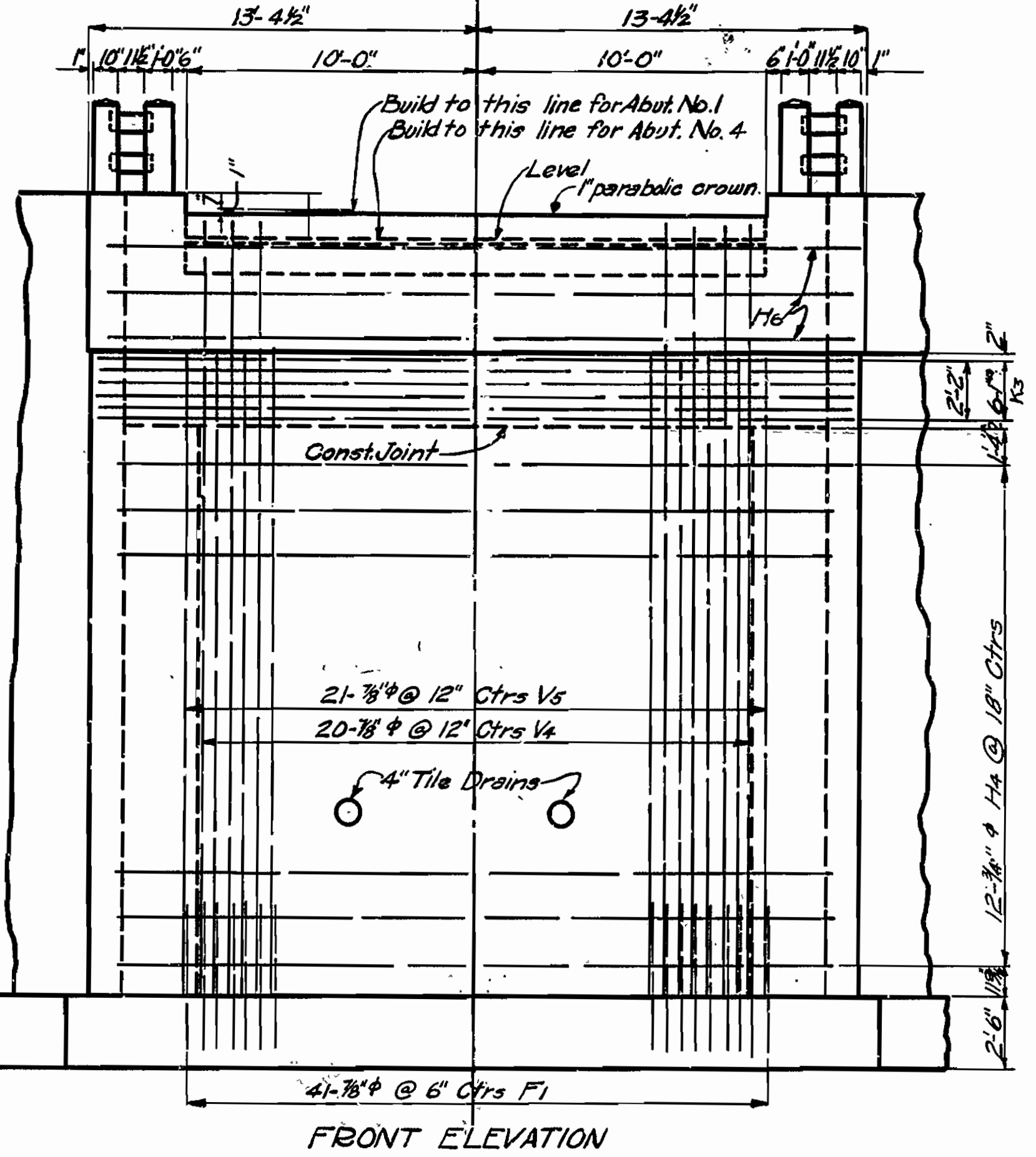
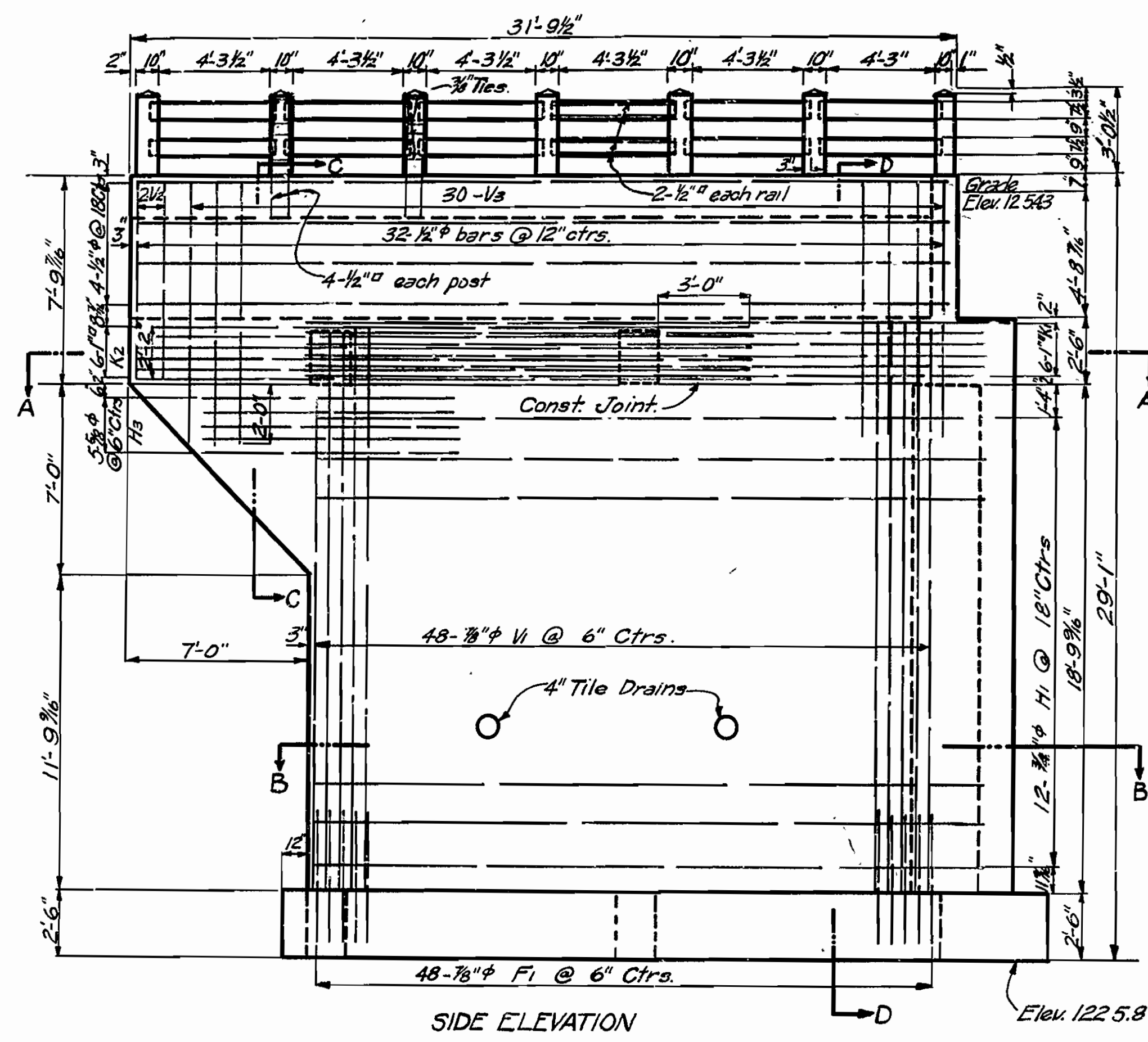
Item	Description	Quantity	Unit
12	Common Excavation	1294	cu. yd.
13	Dry Excav. for Struct.	418.0	"
13	Wet Excav. for Struct.	512.8	"
13	S.R. Excav. for Struct.	91.8	"
17	Borrow	2359	"
5A	Class "A" Concrete	130.05	"
5A	Class "S" Concrete	195.72	"
55	Reinforcing Steel	89639	lb.
56	Struct. Steel in Truss Bridges	233851	"
69	Rip Rap	42.15	cu. yd.
74	Concrete Paving for Struct.	134.00	lin. ft.

For details of Superstructure
 See Drawing No. 1095.
 NOTE: Road slabs abutting ends of deck slab of
 this bridge are part of F.A.P. 36-Res-B

D.A. 85 sq. miles (Mountainous)

Note: Wrap one end of each rail with tar paper. See Detail.

FED. ROAD DIST. No.	STATE	FED. AID PROJ. No.	FISCAL YEAR	SHEET No.	TOTAL SHEETS	FISCAL YEAR	Job No.	SHEET No.	TOTAL SHEETS
6	ARK.	36-Rev	1929	11	37	1929	4123	7	33



ROUTE 71 SEC. 16
ARKANSAS STATE HIGHWAY DEPARTMENT
 LITTLE ROCK, ARK.
 Drawn By: A.L.G. Date: 1-6-30
 Traced By: E.M.M. Date: 1-10-30
 Checked By: _____ Date: _____
BRIDGE NO. 1208 DRAWING NO. 2506
 Scale: 1/4 in. = 1 ft.

Note: Tile Drains to be placed as low as free outlet can be obtained.

Std. Name plates to be furnished by the State. To be placed on the 10"x12" post right hand side only.

Note: T3 bars spaced same as T2 bars.

Note: F6 bars spaced same as F5 bars.

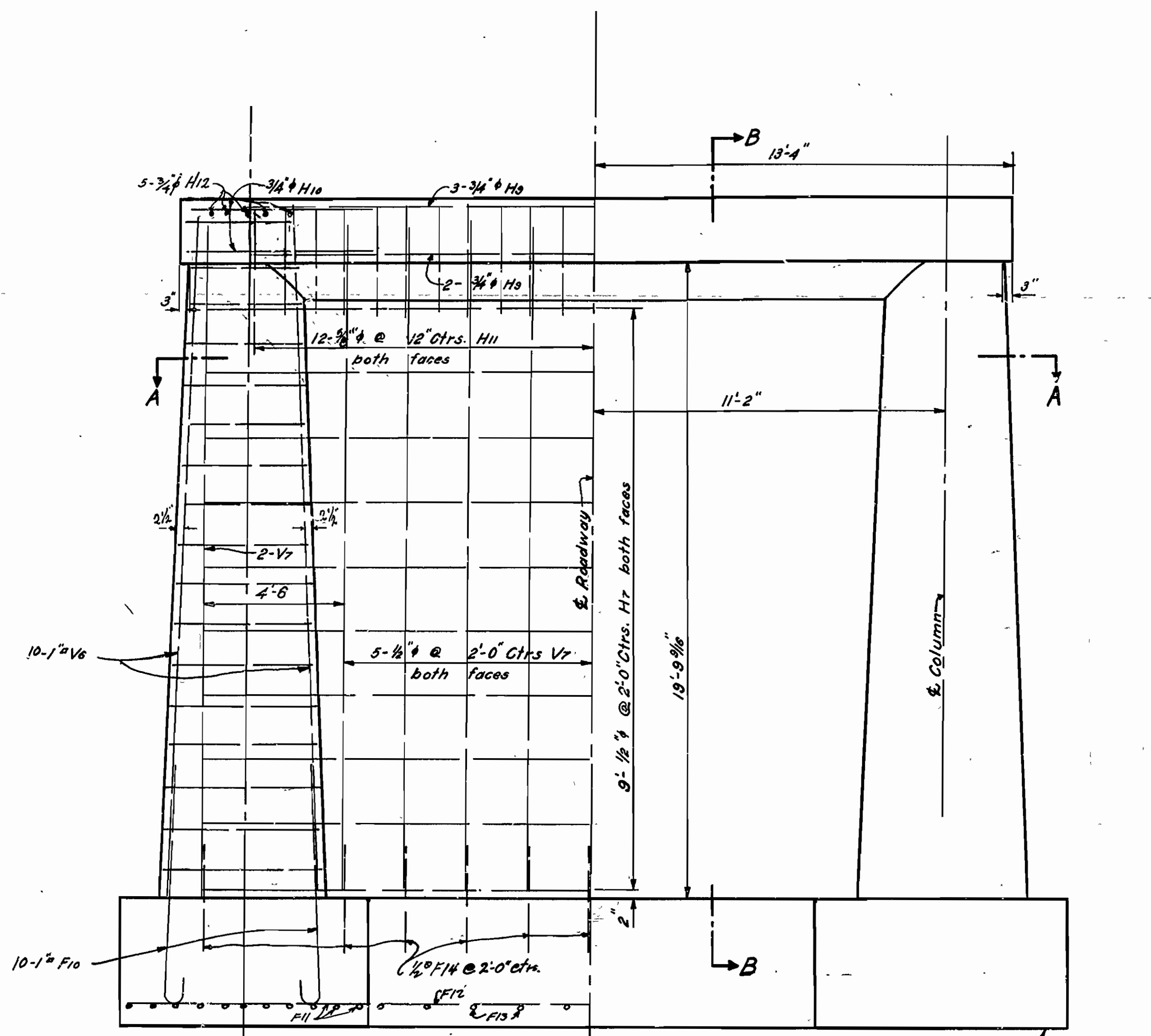
Note: F5 bars spaced same as F2.

Fold tar paper over sides & edges as shown. One joint for each rail member. Cut off paper flush with face of post after forms are removed.

SKETCH SHOWING METHOD OF PLACING EXP. JOINT FOR RAIL MEMBERS

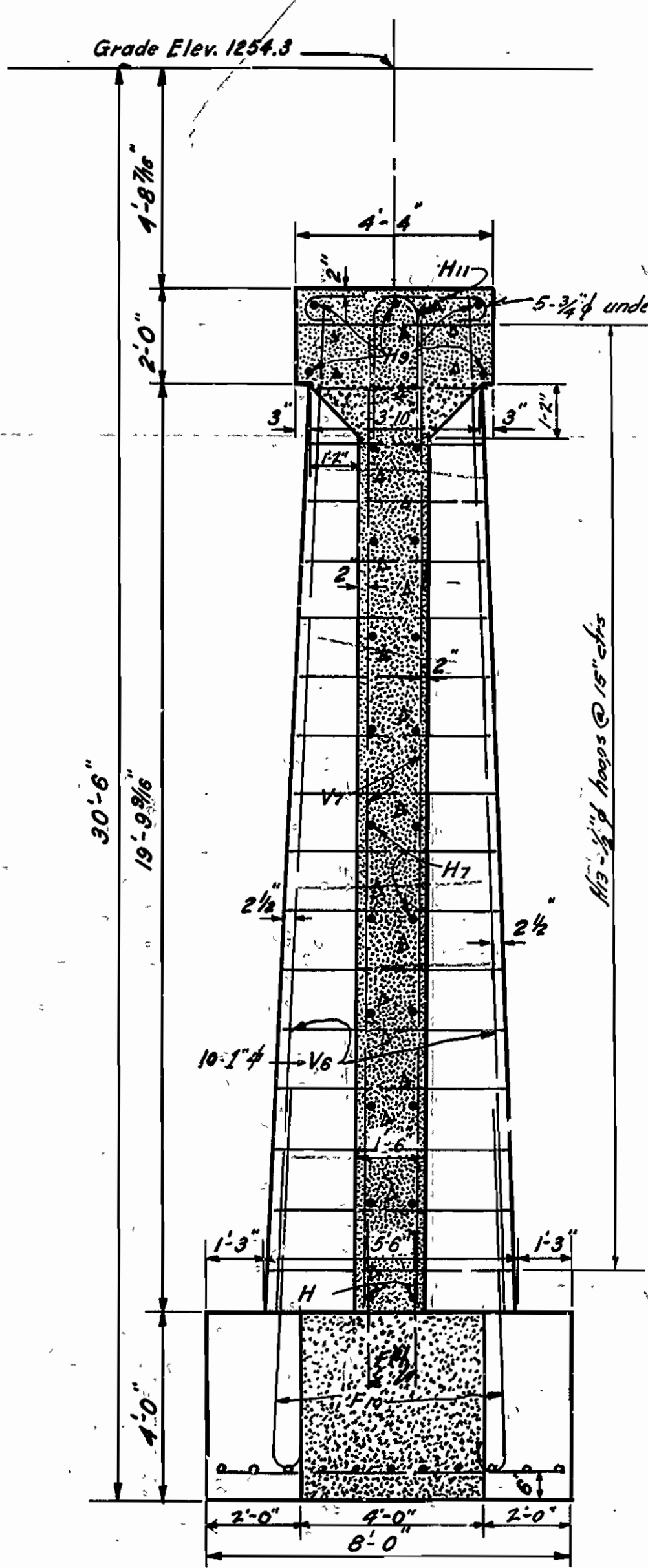
M.B. Harris
BRIDGE ENGINEER

FISCAL YEAR	Job No.	SHEET NO.	TOTAL SHEETS
1929	4123	8	33
FED. ROAD DIST. No.	STATE	FED. AID PROJ. No.	FISCAL YEAR
6	ARK.	36-182	1929
SHEET No.	TOTAL SHEETS		
12	37		

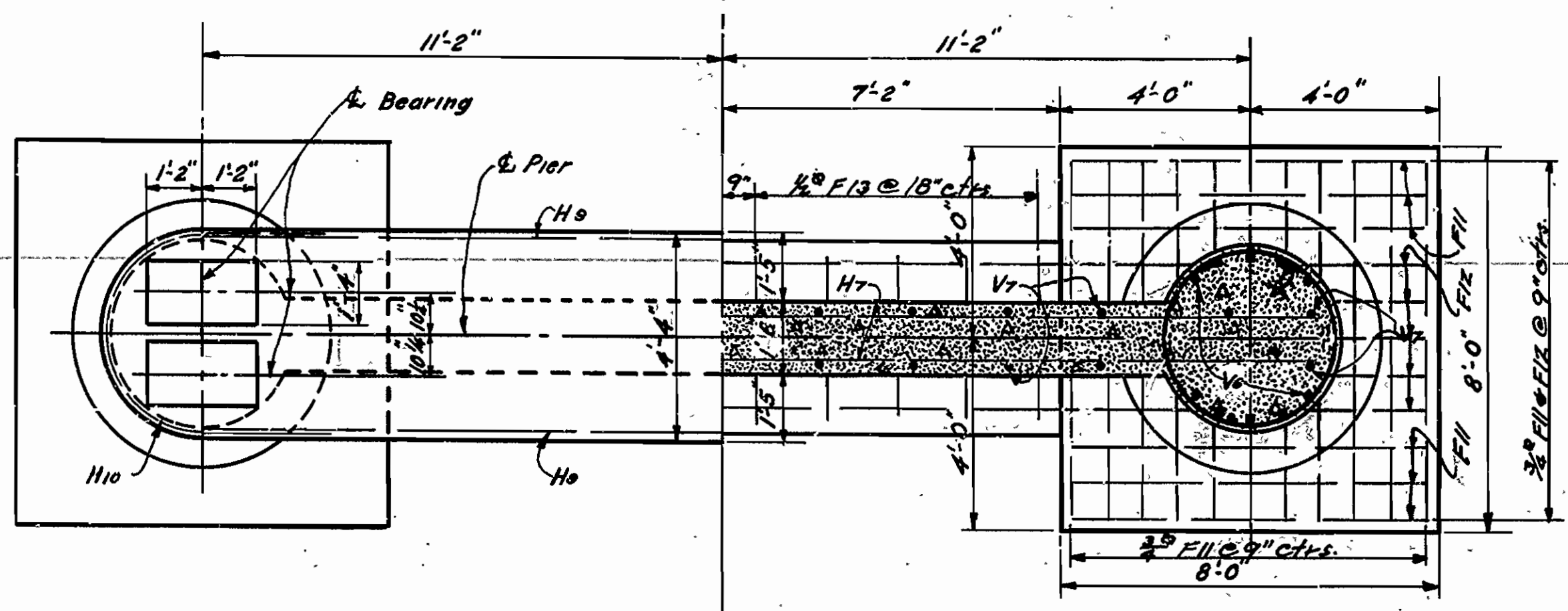
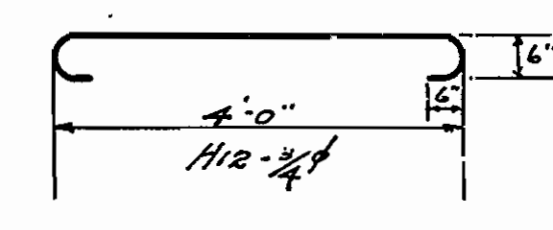
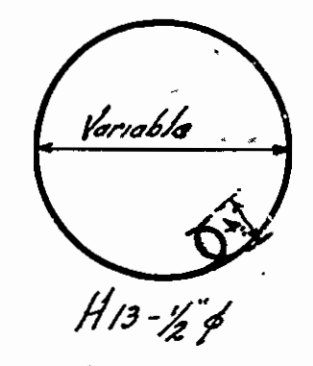
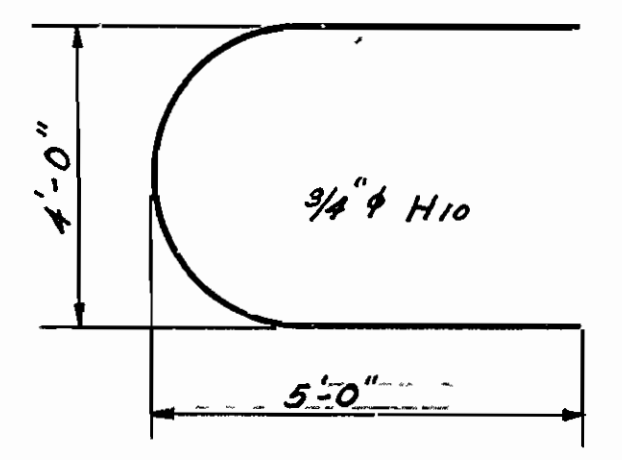
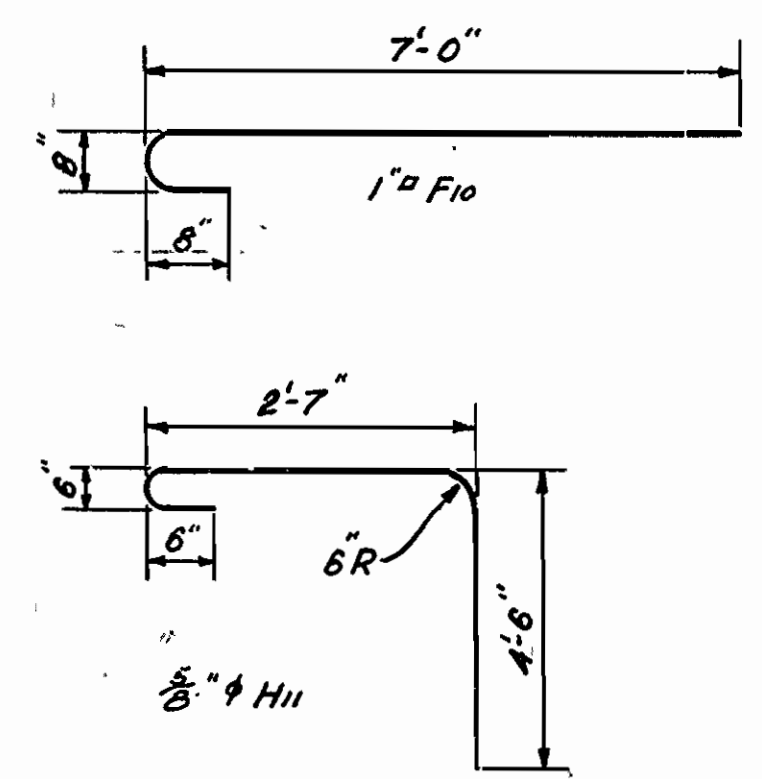


HALF ELEVATION SHOWING REINFORCING

HALF ELEVATION



SECTION B-B



HALF PLAN

HALF SECTION A-A

DETAILS OF
PIERS No. 2 3
FOR BRIDGE OVER
WEST FORK OF WHITE RIVER
FAYETTEVILLE - WINSLOW ROAD
WASHINGTON CO.

ROUTE 71 SEC. 16
ARKANSAS STATE HIGHWAY DEPARTMENT
LITTLE ROCK, ARK.

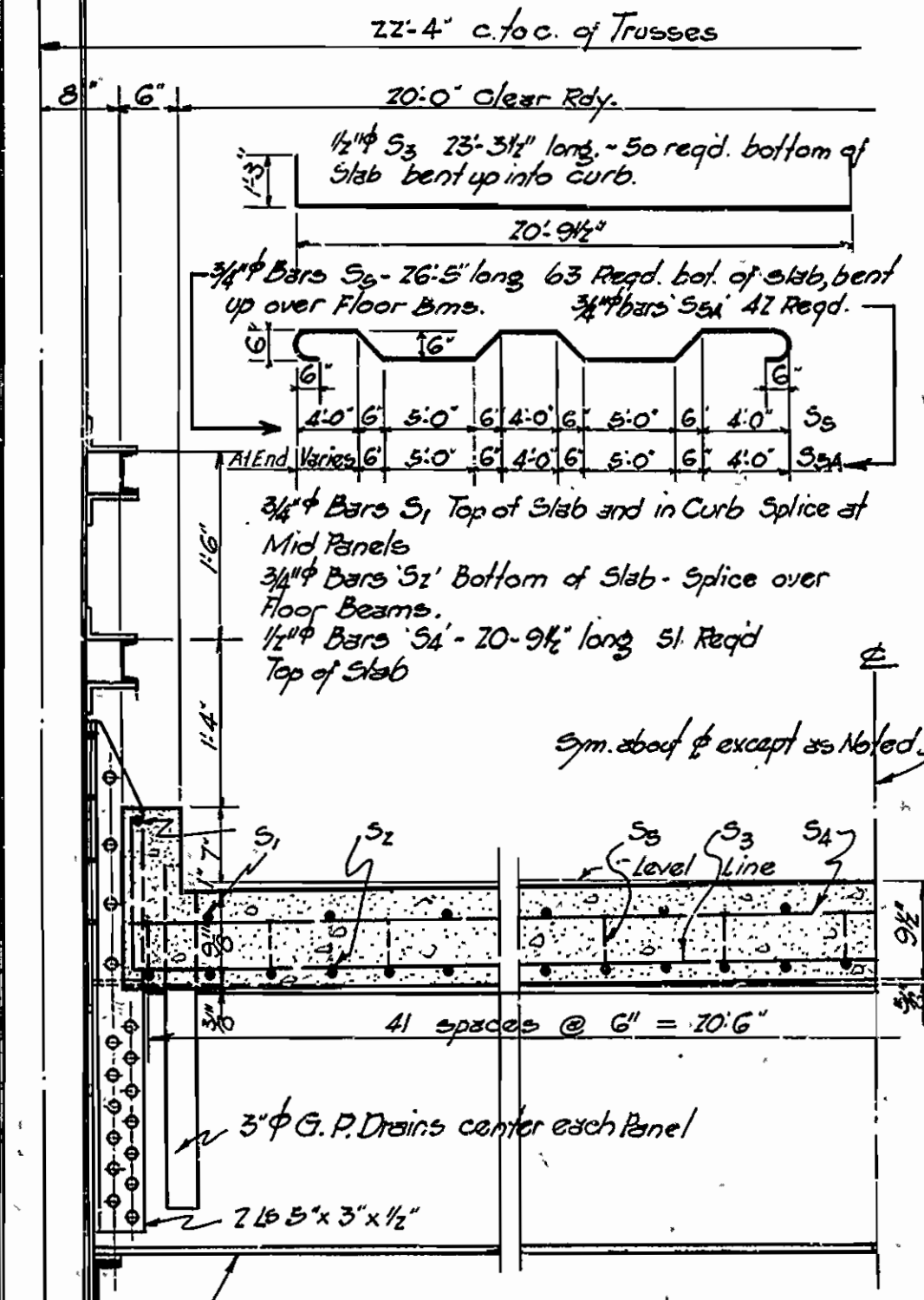
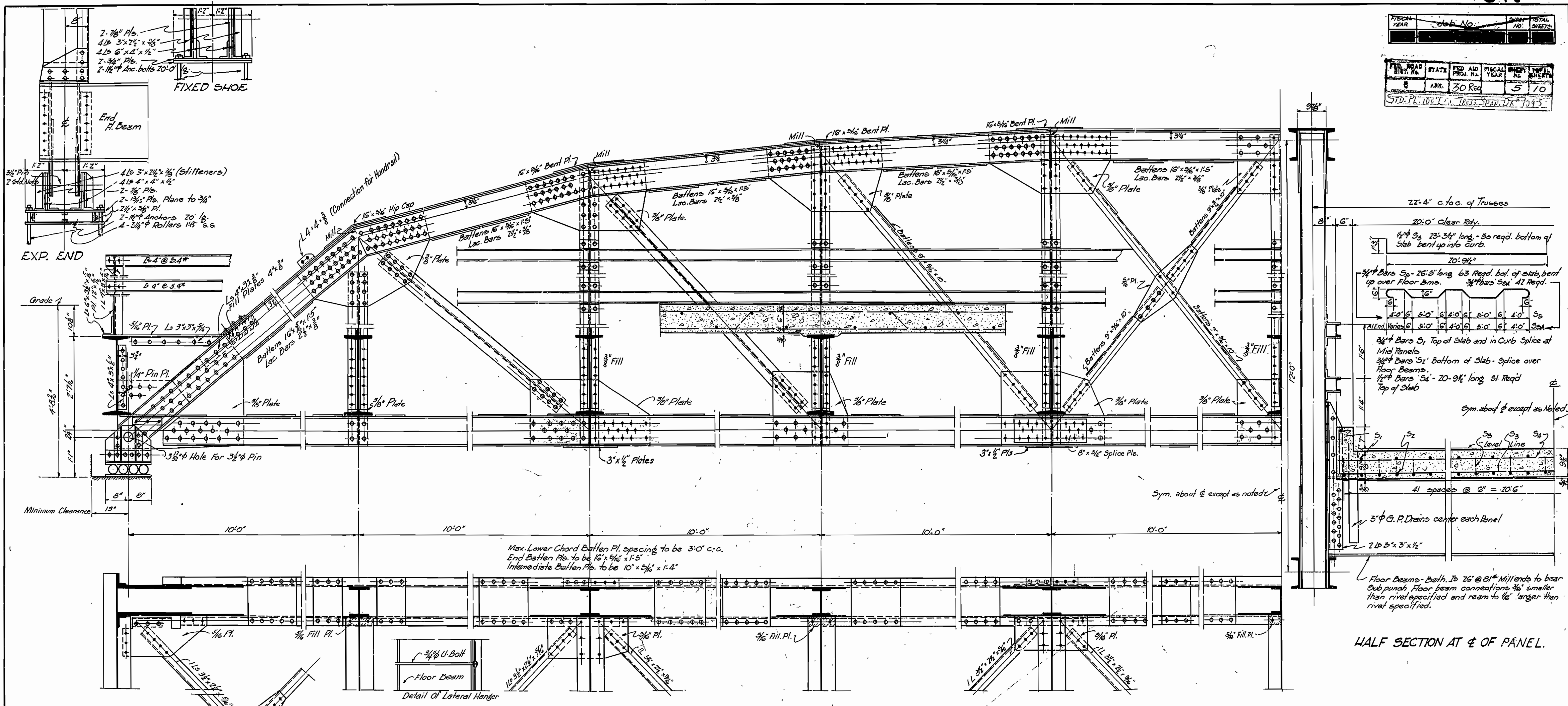
Drawn By: A.L.G. Date: 1-2-30
Traced By: Clark Date: 1-10-30
Checked By: Date:
BRIDGE NO. 1208
Scale: 3/8" = 1' ft.
DRAWING NO. 2507

M.B. Lewis
BRIDGE ENGINEER

FISCAL YEAR	Job No.	SHEET NO.	TOTAL SHEETS
1930	30	5	10

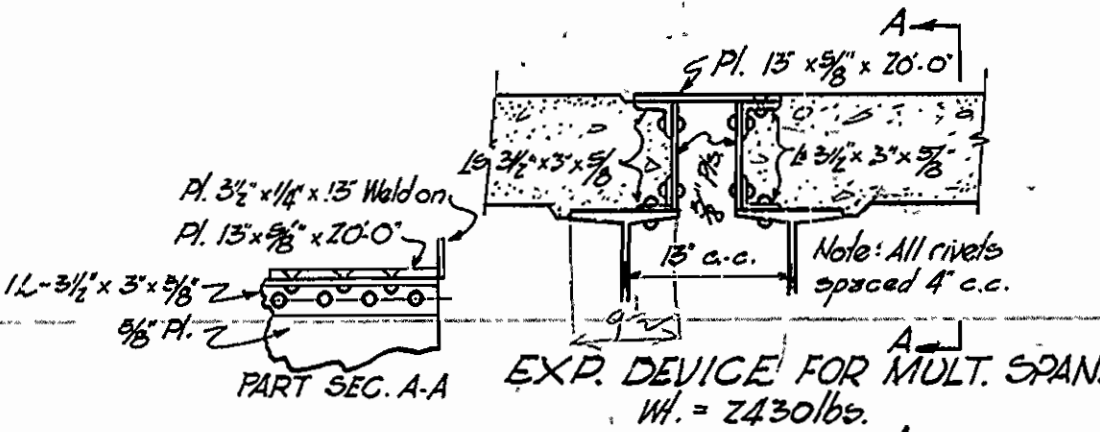
STATE	FED. AID PROJ. NO.	FISCAL YEAR	SHEET NO.	TOTAL SHEETS
ARK.	30	1930	5	10

STD. PL. 100' L. C. TRUSS SPAN, D.C. 1925



FLOOR BEAM DATA

D.L.M. = $30,247 \times 77.53 \times 15 = 1,013,173 \frac{1}{2}$
 L.L.M. = $22,388 \times 10,417 - 17000 \times 6 = 1,934,992 \frac{1}{2}$
 Imp. @ 30% = $580,378 \frac{1}{2}$
 Total Mom. = $3,528,544 \frac{1}{2}$
 Sec. Mod. of Both Is $26' @ 81\frac{1}{2} = 201.71$



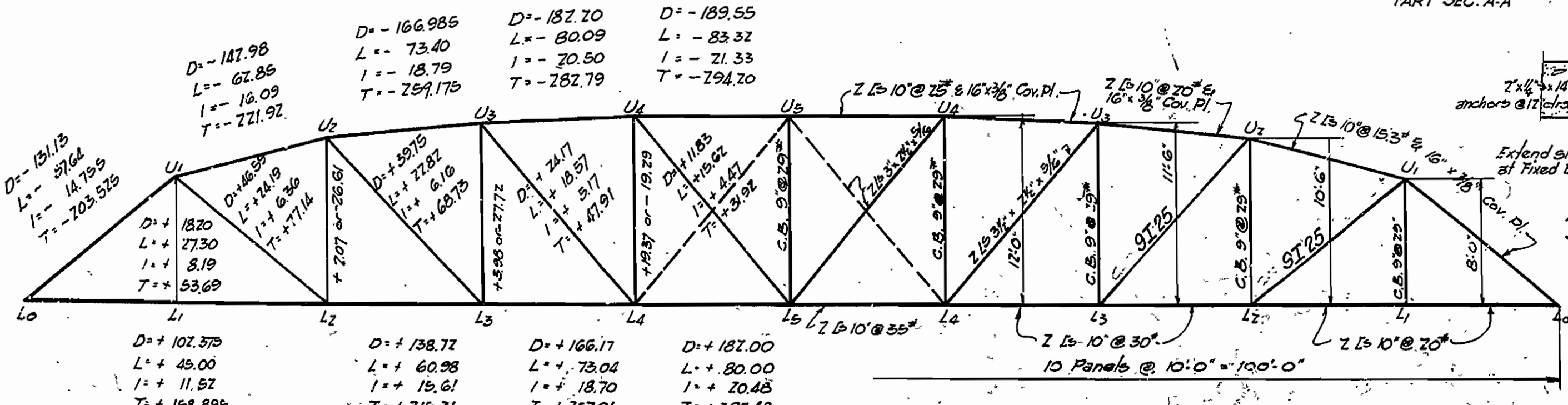
SPECIFICATIONS

Live Load
 Uniform Load - 80 lbs. per Sq. Ft. of Rdy.
 Concentrated - 15 Ton trucks as shown.
 Impact - 100% (L+300)

Rivets to be 3/4" in diameter.
 Rivet holes: Subpunch all holes in Main Truss Connections (both shop and field) 3/8" smaller than rivet specified and ream to fit larger than rivet specified during shop assembly. Members shall be match-marked and a suitable diagram furnished for erection.
 All field connections to be riveted. Rivet holes in Tension Members so spaced that only one hole is deducted from each angle at point of Maximum Stress. Deduct two web holes and one Flange hole from each channel at point of Max. Stress.
 Shop Paint: Local red lead and raw linseed oil.
 Field Paint: 2 coats of different colors as approved by the Engineer.
 Batten Plates shall be spaced not over 3'-0" c.c. on Tension members.
 Concrete Floor Slab to be 4" S.

QUANTITIES

Structural Steel (Not including Wgt. of Exp. Devices)	76800 lbs.
Reinforcing Steel (Out to Out of End Floor Beams)	12740 lbs.
Class '3' Concrete	65 Cu. Yds.



DESIGN STRESSES & SELECTION OF MEMBERS

For Details For Reflooring, see Dwg. No. 1035A.

**STANDARD PLAN
 100'-0" LOW TRUSS SPAN
 20'-0" CLEAR ROADWAY**

**ARKANSAS STATE HIGHWAY DEPARTMENT
 LITTLE ROCK, ARK.**

Drawn By: Noe, Date: 5-1-29
 Traced By: F.A.W. Date: 5-6-29
 Checked By: [Signature] Date: [Blank]
 BRIDGE No. [Blank] DRAWING No. 1095